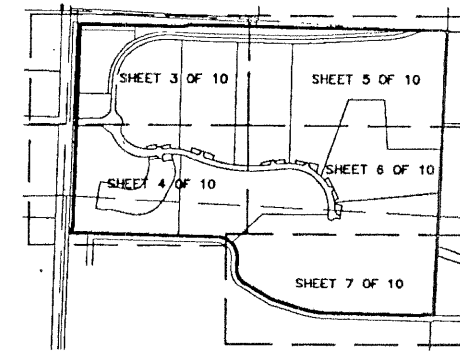
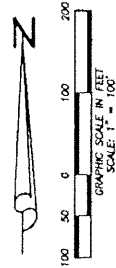


FRENCHMAN'S RESERVE PCD - PLAT ONE

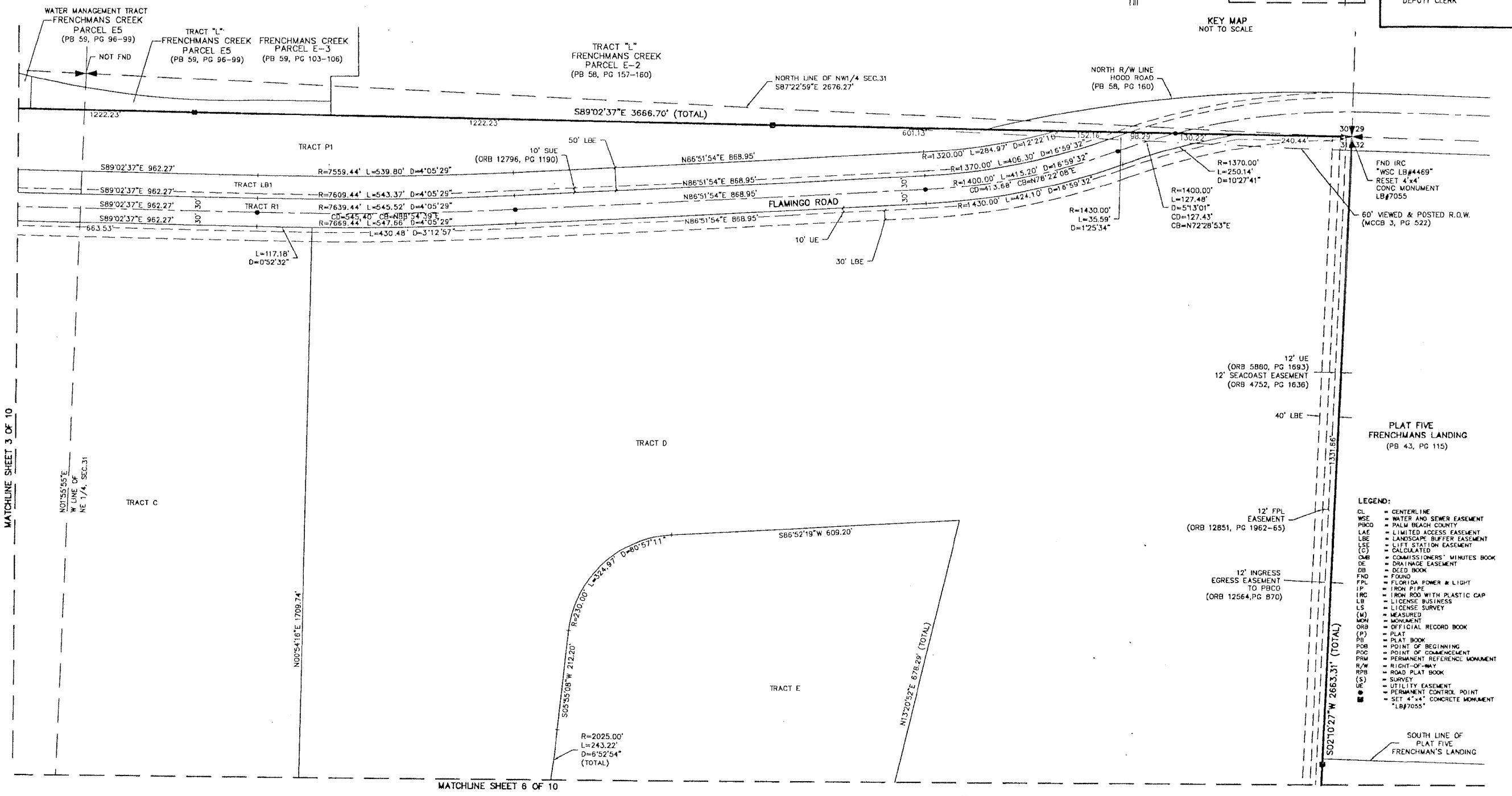
BEING A PARCEL OF LAND LYING IN SECTIONS 31,
TOWNSHIP 41 SOUTH, RANGE 43 EAST, CITY OF PALM BEACH
GARDENS PALM BEACH COUNTY, FLORIDA.

AUGUST, 2001 SHEET 5 OF 10



15

STATE OF FLORIDA
COUNTY OF PALM BEACH
THIS PLAT WAS FILED FOR
RECORD AT _____ M.
THIS _____ DAY OF _____
A.D. 2001 AND DULY RECORDED
IN PLAT BOOK _____ ON
PAGES _____ AND _____
DOROTHY H. WILKEN
CLERK CIRCUIT COURT
BY: _____
DEPUTY CLERK



- LEGEND:**
- CL = CENTERLINE
 - WSE = WATER AND SEWER EASEMENT
 - PBCD = PALM BEACH COUNTY
 - LAE = LIMITED ACCESS EASEMENT
 - LBE = LANDSCAPE BUFFER EASEMENT
 - LSE = LIFT STATION EASEMENT
 - (C) = CALCULATED
 - COM = COMMISSIONERS' MINUTES BOOK
 - DE = DRAINAGE EASEMENT
 - DB = DEED BOOK
 - FND = FOUND
 - FPL = FLORIDA POWER & LIGHT
 - IP = IRON PIPE
 - IRC = IRON ROD WITH PLASTIC CAP
 - LB = LICENSE BUSINESS
 - LS = LICENSE SURVEY
 - (M) = MEASURED
 - MON = MONUMENT
 - ORB = OFFICIAL RECORD BOOK
 - (P) = PLAT
 - PB = PLAT BOOK
 - POB = POINT OF BEGINNING
 - POC = POINT OF COMMENCEMENT
 - PRM = PERMANENT REFERENCE MONUMENT
 - R/W = RIGHT-OF-WAY
 - RFB = ROAD PLAT BOOK
 - (S) = SURVEY
 - UE = UTILITY EASEMENT
 - PCP = PERMANENT CONTROL POINT
 - SET 4"x4" CONCRETE MONUMENT "LB#7055"

MATCHLINE SHEET 3 OF 10

MATCHLINE SHEET 6 OF 10

Wantman Group, Inc. Engineering ♦ Surveying ♦ Mapping 901 NORTHPOINT PARKWAY, SUITE 204 WEST PALM BEACH, FL 33407 (561) 687-2220 phone (561) 687-1110 fax CERT No. 6091 - LB No. 7055			
CAO	K:\TOLLBROS\FRENCHMAN\DWG\218PLAT1		
REF			
FLD	RP/AB	FB. 000 PG. 00	JOB 01-218
OFF	AJP/MRJ		DATE 05/15/01
CKD	RBP	SHEET 5 OF 10	DWG 218PLAT1

K:\TOLLBROS\FRENCHMAN\DWG\218PLAT1.dwg 06/25/2001 04:01:30 PM EDT